

## Using the USB method to flash your MAG254 STB

**\*\*\*\*\* DO THIS AT YOUR OWN RISK \*\*\*\*\***

Download the firmware version of your choice, unzip it and you will find a directory that has the same name as the firmware version you have downloaded, e.g. "mag254 r7".

Open that "mag254 r7" folder and you will find it contains a folder named "mag254".

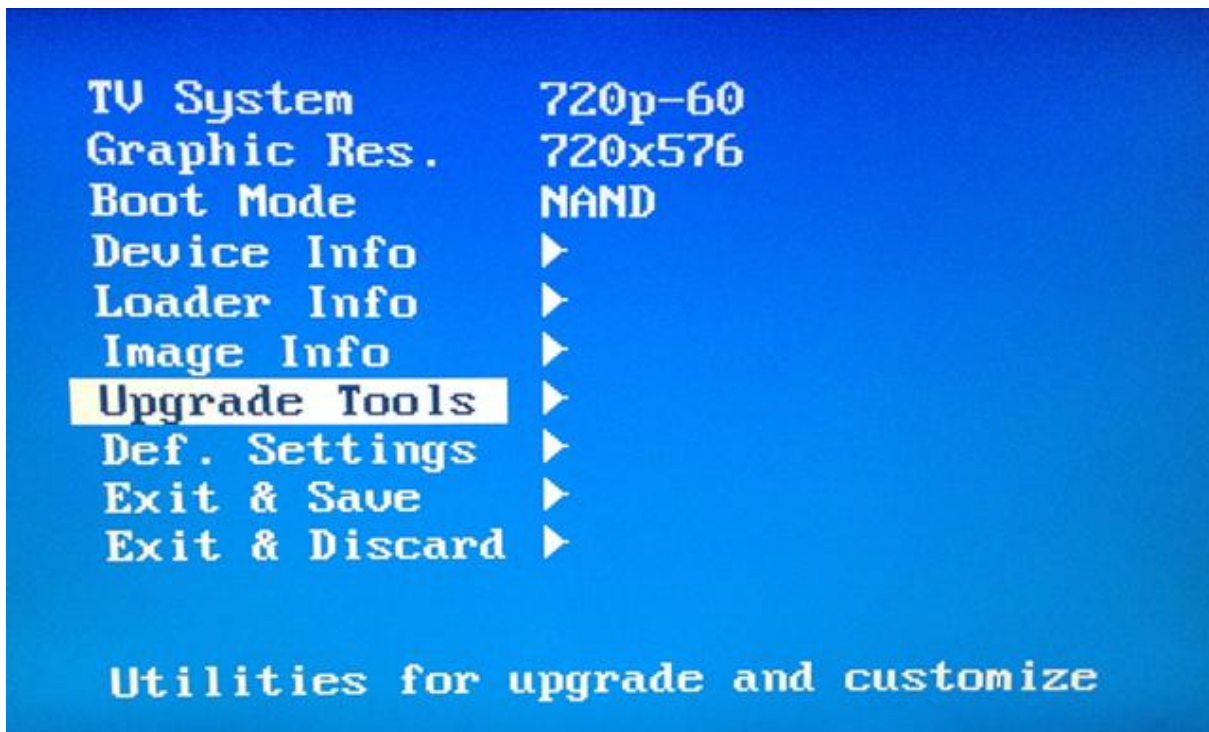
Copy and paste that "mag254" folder on to a CLEAN USB stick (no other files on the stick) formatted to FAT32.

Remove the USB stick from your PC and insert it into the **REAR** USB port of your MAG 254

To update the MAG 254 firmware you will need to enter the units BIOS.

To enter the MAG 254's BIOS AND UPDATE YOUR FIRMWARE after you have inserted the USB stick into the rear USB port of the MAG 254 do the following:

1. UNPLUG the unit by removing the AC adapter plug from the rear of the MAG
2. USING YOUR MAG 254 REMOTE AND POINTING IT AT THE FRONT OF YOUR MAG PRESS AND HOLD DOWN THE MENU BUTTON (located just above the volume + button it has 3 dots and 3 lines) CONTINUE TO HOLD DOWN THE MENU BUTTON WHILE POINTING IT AT THE MAG AND POWER UP THE MAG BY PLUGGING THE AC ADAPTER BACK IN. CONTINUE TO HOLD THE MENU BUTTON FOR ABOUT 5 SECONDS AND THE BIOS SCREEN SHOULD THEN APPEAR. YOU CAN NOW RELEASE THE MENU BUTTON ON THE REMOTE.

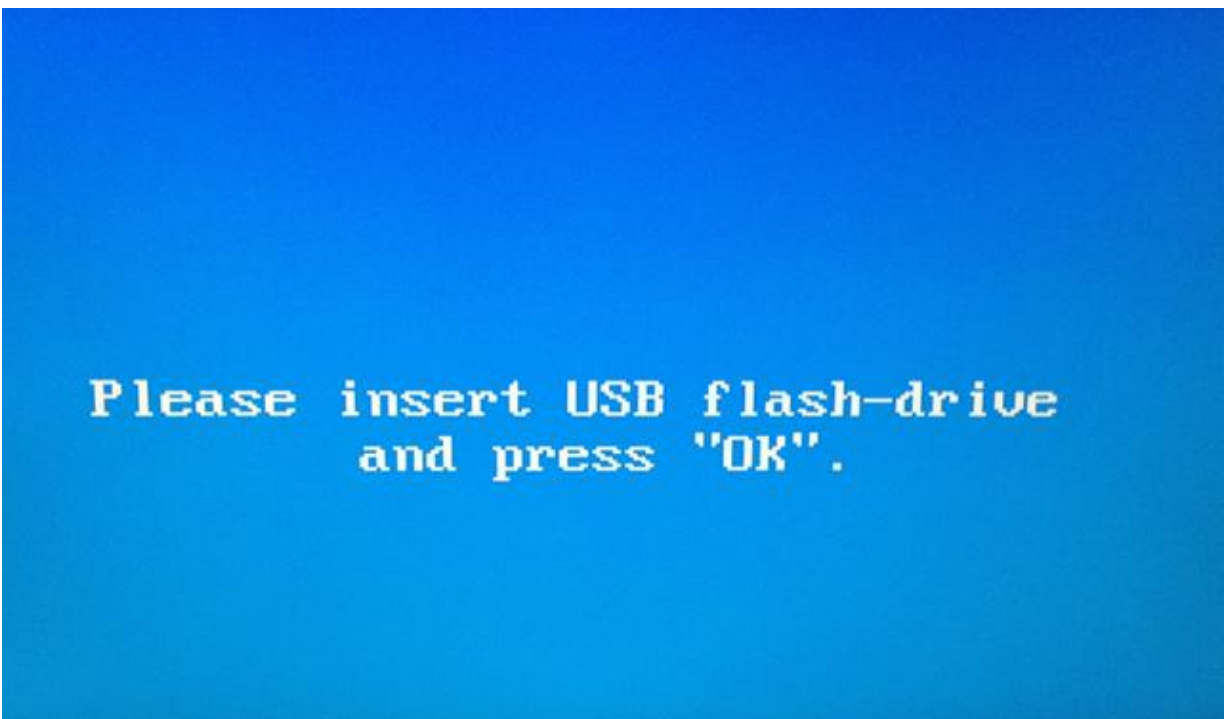


3. YOU WILL NOTICE SEVERAL ITEMS IN THE BIOS PAGE, SCROLL DOWN UNTIL YOU HAVE HIGHLIGHTED "Upgrade tools" AND THEN PRESS THE RIGHT ARROW ON YOUR REMOTE.

4. YOU WILL NOW GET A NEW SCREEN WITH DIFFERENT OPTIONS. SCROLL DOWN UNTIL YOU HAVE HIGHLIGHTED "USB Bootstrap" AND ONCE AGAIN PRESS THE RIGHT ARROW ON YOUR REMOTE.



5. YOU WILL NOW GET A NEW SCREEN ASKING YOU TO INSERT A USB FLASH DRIVE AND PRESS OK



6. CHECK TO MAKE SURE THE USB STICK IS IN THE REAR USB PORT OF THE MAG UNIT AND PRESS OK ON THE REMOTE. THE PROCESS WILL START AND WHEN THE MAG IS FINISHED IT WILL AUTOMATICALLY REBOOT. YOUR NEW FIRMWARE IS NOW INSTALLED IN YOUR MAG 254.

**DO NOT INTERRUPT THE MAG UNIT AS IT IS UPDATING THE FIRMWARE. TO DO SO CAN DAMAGE YOUR UNIT..**